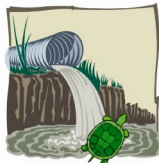


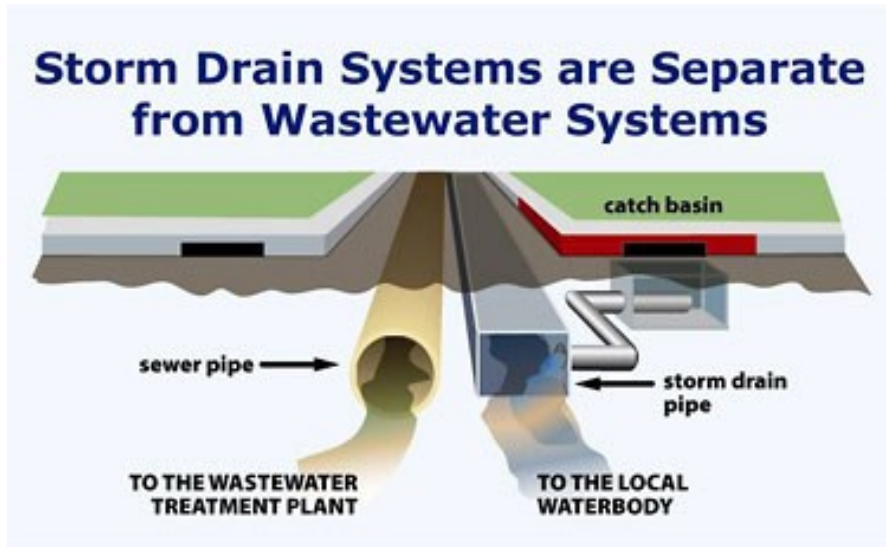
2016 STORMWATER POLLUTION PREVENTION TIPS

DIRT IN THE DRAIN

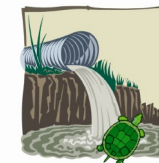


TURTLES COMPLAIN

Storm Drain systems drain to local water sources, while sewer systems flow to the Wastewater Treatment Plant. The sewer that flows to the sewer system is treated. Storm Drain systems are not treated, thus the items that enter this system are also draining to the water source. Pet waste, leaves, grass clippings, and hazardous waste are to be disposed of in a proper manner so they do not end up in the local water source.



DIRT IN THE DRAIN



TURTLES COMPLAIN

According to the City of Harker Heights Ordinance:

§ 90.05 ANIMAL WASTE.

The owner of every animal shall make sanitary disposal of any excreta deposited by his animal on public walks, streets, recreation areas, or upon private property not within the control, possession, or supervision of said owner.



Take notice of these markers, they are there for the protection of our water source



STORM WATER HOTLINE 254-953-5649