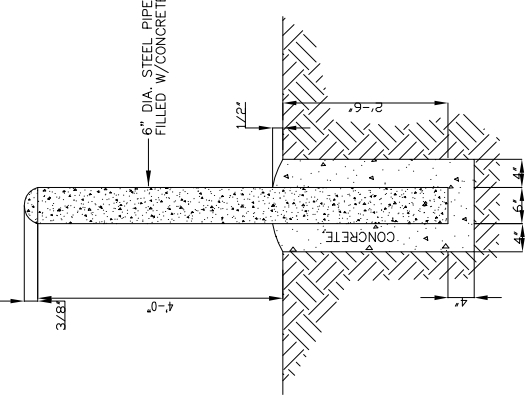
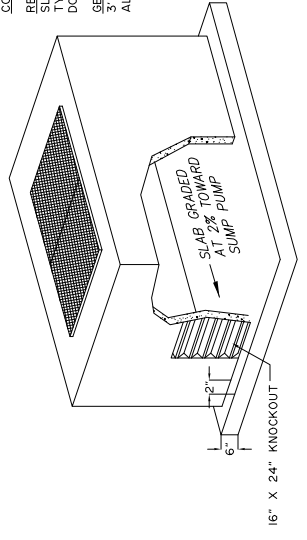


PLAN
NTS

- NOTES:
1. INSTALL BOLLARDS AROUND METER VAULT
 2. BOLLARDS SHALL BE PRIMED AND PAINTED, FINISH COAT WHITE.



BOLLARD DETAIL
NTS

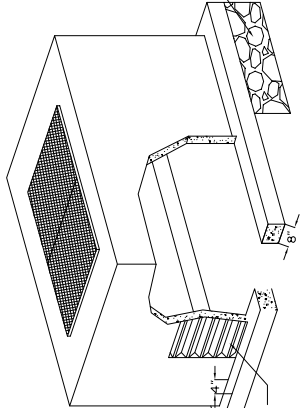


SOLID-TYPE SLAB DETAIL
8'0" X 5'6" X 6" THICKNESS

- NOTES:
1. ALL EXTERNAL NUTS, BOLTS AND WASHERS WILL BE STAINLESS STEEL.
 2. A 100V SUMP PUMP WITH BUILT IN FLOAT SYSTEM SHALL BE INSTALLED ALONG WITH AN APPROVED MEANS TO DISCHARGE WATER FROM THE VAULT.

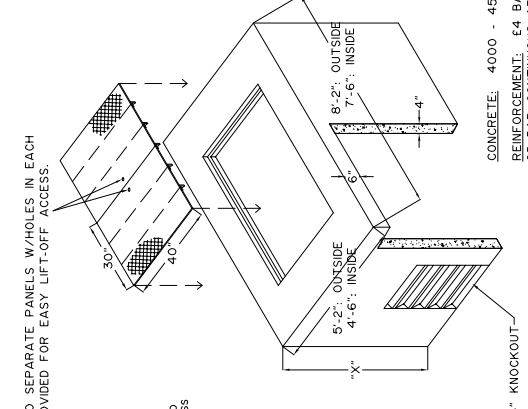
TYPICAL
METER VAULT - WET CONDITIONS
NTS

CONCRETE: 4000 - 4500 PSI
REINFORCEMENT: ALL BARS GRADE 60, E4 BAR 8" OC EW. RING TYPE, E4 BAR 6" OC EW. RING TYPE, E4 BAR 6" CONTINUOUS @ DOUBLED ON CORNERS.
GENERAL NOTES: STANDARD ACCESS DOOR IS 3' X 5' CLEAR, AND SPRING ASSISTED. ALUMINUM HALLIDAY DOORS/HATCH ARE AVAILABLE.



RING-TYPE SLAB DETAIL
8'0" X 5'0" X 6" THICKNESS

TYPICAL
METER VAULT - DRY CONDITIONS
NTS



TYPICAL
METER VAULT 7.5 X 4.5 DL
NTS

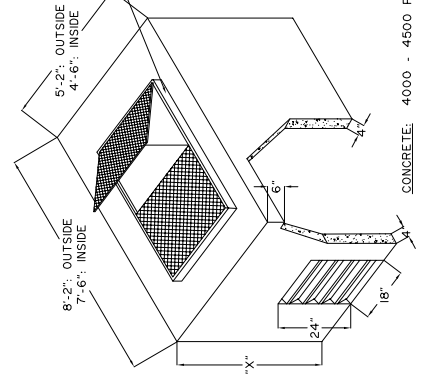
TWO SEPARATE PANELS W/HOLES IN EACH PROVIDED FOR EASY LIFT-OFF ACCESS.

CONCRETE: 4000 - 4500 PSI
REINFORCEMENT: E4 BAR GRADE 60, 8" OC EW. E5 BAR CONTINUOUS AROUND OPENING IN TOP.

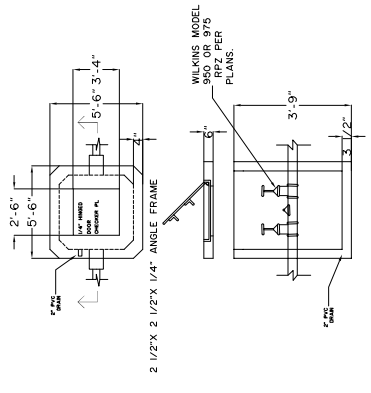
GENERAL NOTES: PARKWAY ACCESS DOORS: 30" X 40" X 3/16" PLATE WITH 5 EACH STIFFENERS 2" X 2" X 1/4" ANGLE WITH FRAME 2 1/2" X 2 1/2" X 1/4" ANGLE.

TYPICAL
METER VAULT 7.5 X 4.5
NTS

TRAFFIC DOOR. ILLUSTRATION SHOWS H-20 PARKWAY DOOR WILL BE CAST IN FLUSH.



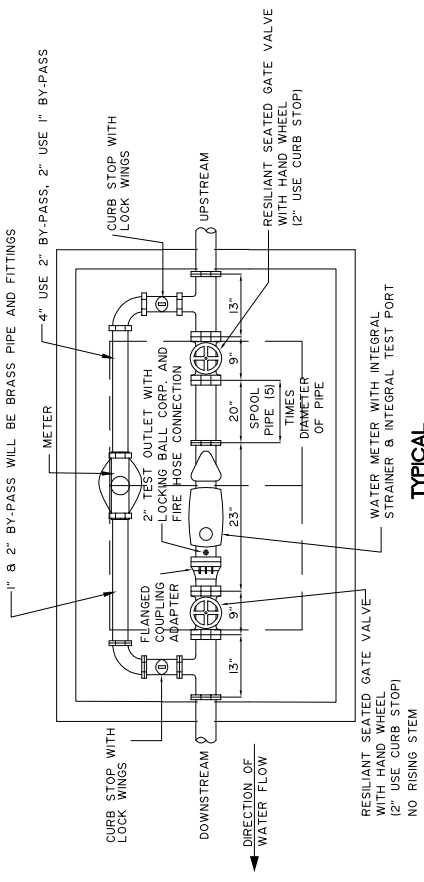
RPZ + VAULT



DIM. "X"	INSIDE CLEARANCE
3'-0"	2'-6"
3'-6"	3'-0"
4'-0"	3'-6"
4'-6"	4'-0"
5'-0"	4'-6"

CONCRETE: 4000 - 4500 PSI
REINFORCEMENT: E4 BAR GRADE 60, 8" OC EW. E5 BAR CONTINUOUS AROUND OPENING IN TOP.

GENERAL NOTES: STANDARD ACCESS DOOR IS 3' X 5' CLEAR AND IS SPRING ASSISTED. ALUMINUM HALLIDAY DOORS/HATCH SHALL BE USED.



TYPICAL
2' THROUGH 4' METER DETAIL
NTS

- NOTES:
1. ALL EXTERNAL NUTS, BOLTS AND WASHERS WILL BE STAINLESS STEEL.
 2. SCREW JOINTS ON BRASS PIPE BYPASS WILL BE ACCEPTED.
 3. NO SWEATED FITTINGS WILL BE ACCEPTED.
 4. PIPE STANDS TO BE INSTALLED AS PER APPROVED MANUFACTURER SPECIFICATIONS.
 5. TO BE TESTED IN THE FIELD BY CONTRACTOR AND VERIFIED BY CITY OF HARKER HEIGHTS UTILITIES.

- CONSTRUCTION NOTES:
1. SEE PLAN - PROFILE SHEETS FOR TYPE, LOCATION, & ELEVATIONS OF CURB INLET.
 2. ALL CONSTRUCTION SHALL CONFORM TO THE STANDARD SPECIFICATIONS OF THE CITY OF HARKER HEIGHTS.
 3. CONCRETE COVER OF REINFORCING STEEL SHALL BE AS SHOWN ON THE PLANS & SHALL BE FROM THE CENTER OF THE OUTSIDE LAYER OF STEEL TO THE FACE OF CONCRETE.
 4. REINFORCING STEEL SHALL BE TO THE CENTER OF BARS.
 5. ALL REINFORCING BARS SHALL HAVE A MINIMUM 1 1/2" CLEARANCE FROM ALL FORMS OR 3" FROM EARTH OF CONCRETE SHALL BE TOoled TO 3/8" RADIUS UNLESS OTHERWISE SPECIFIED. ALL SLAB SURFACES SHALL BE STEEL TROWELLED AND FINISHED WITH A LIGHT BRUSHED SURFACE. ALL EXPOSED WALL SURFACES SHALL BE RUBBED TO A UNIFORMLY SMOOTH SURFACE.
 6. ALL REINFORCING BARS SHALL BE TIED TO 3/8" RADIUS UNLESS OTHERWISE SPECIFIED. ALL REINFORCING BARS SHALL BE TIED TO 3/8" RADIUS UNLESS OTHERWISE SPECIFIED.
 7. ALL REINFORCING BARS SHALL BE TIED TO 3/8" RADIUS UNLESS OTHERWISE SPECIFIED. ALL REINFORCING BARS SHALL BE TIED TO 3/8" RADIUS UNLESS OTHERWISE SPECIFIED.



DEPARTMENT OF PUBLIC WORKS

WATER DETAILS

ENGINEER:	SCALE:	DATE:	SHEET #
	N.T.S.		
DRAWN BY:	CHECKED BY:		
			OF