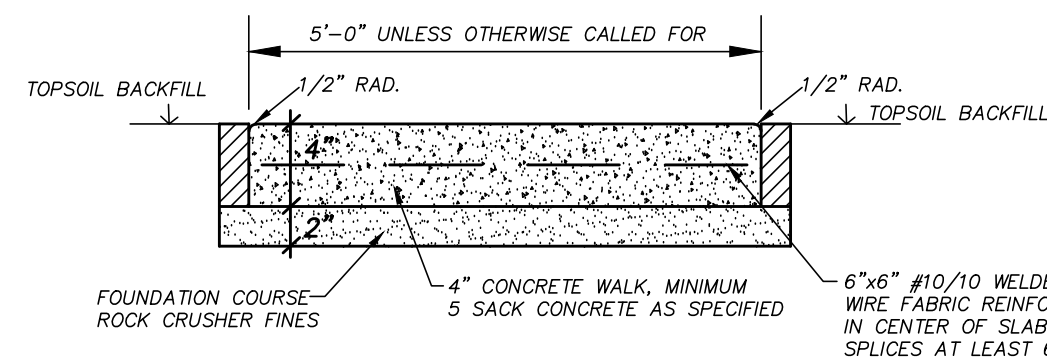
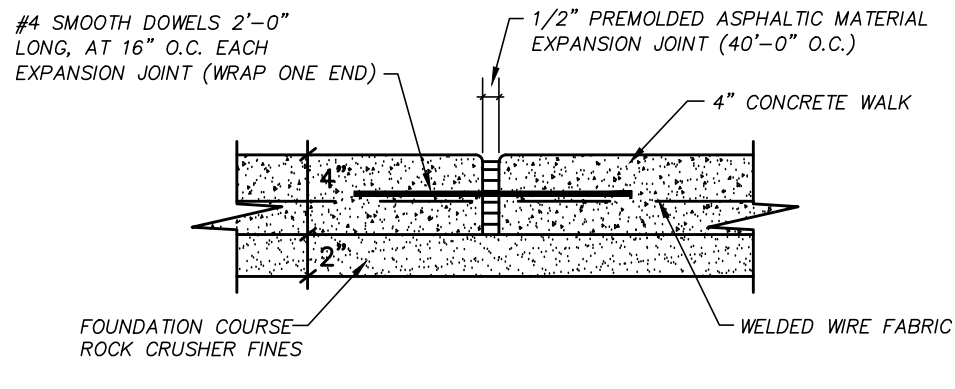


TYPICAL SECTION - CITY STREET, 31' B-B TO 67' B-B  
NTS

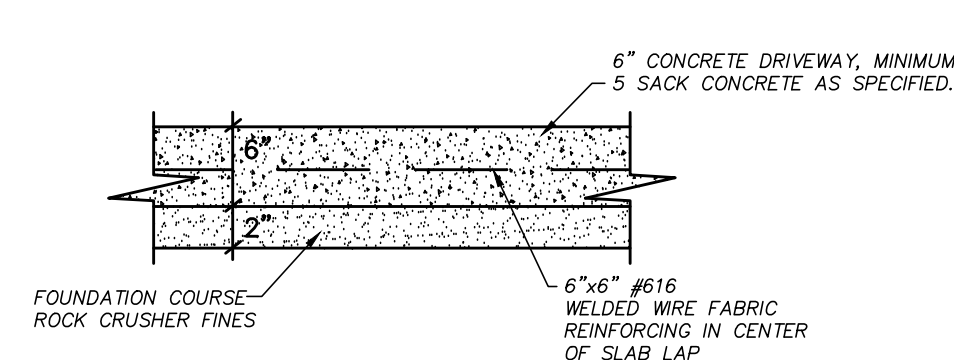
NOTE:  
PROVIDE EXPANSION JOINTS AT 40'-0" O.C. AND AT ALL ABUTTING VERTICAL CONCRETE SURFACES SUCH AS CURBS, DRIVEWAYS, ETC.  
PROVIDE SAWCUT CONSTRUCTION JOINTS AT 5'-0" O.C.



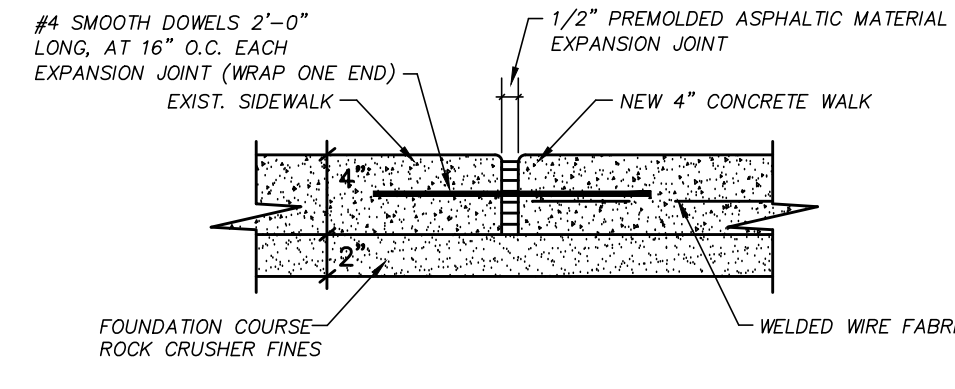
TYPICAL SECTION AT SIDEWALK  
NTS



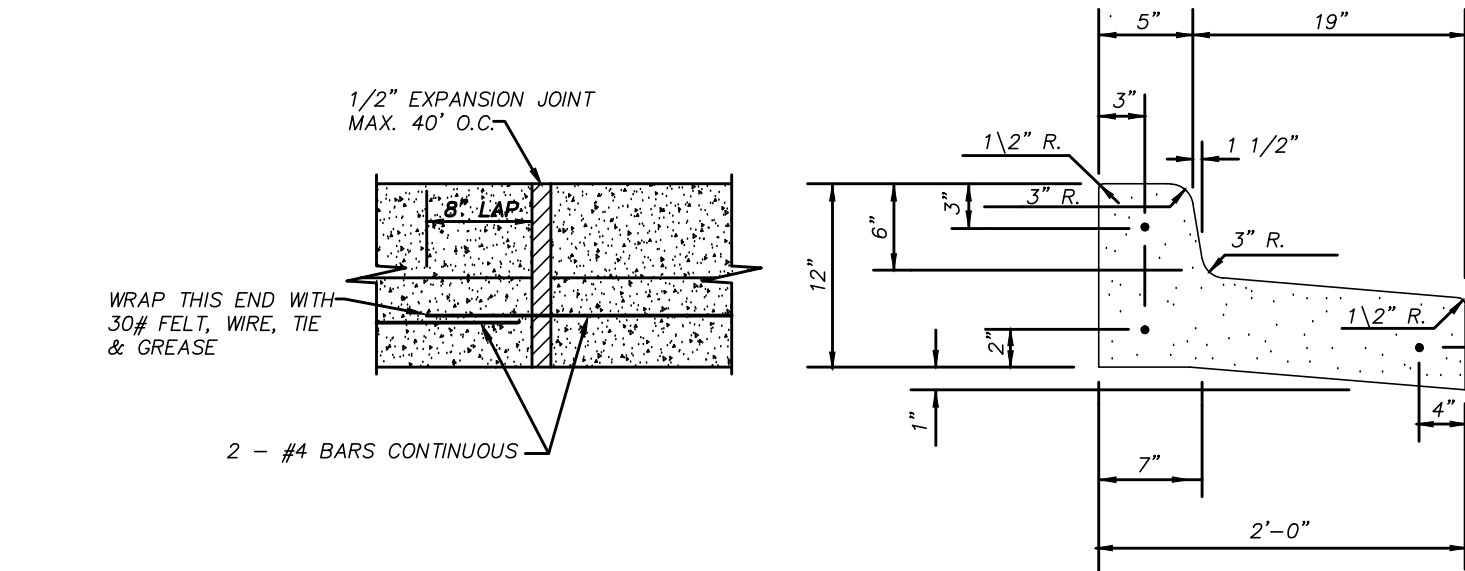
TYPICAL SIDEWALK EXPANSION JOINT  
NTS



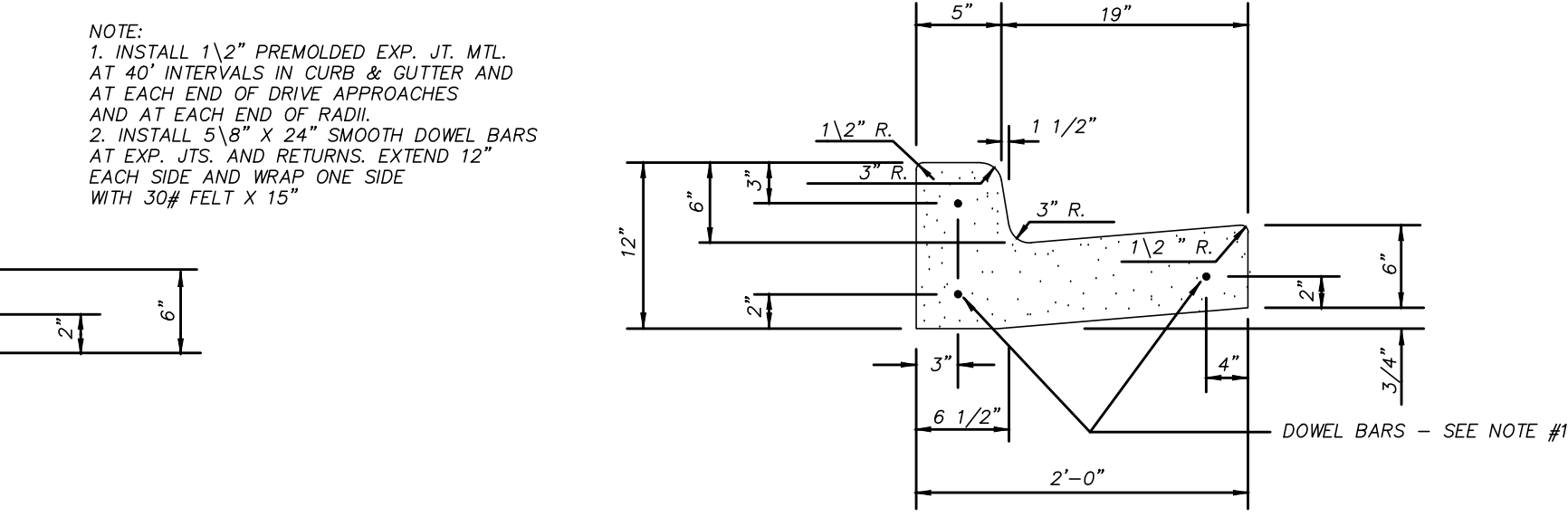
TYPICAL SECTION AT DRIVEWAY  
NTS



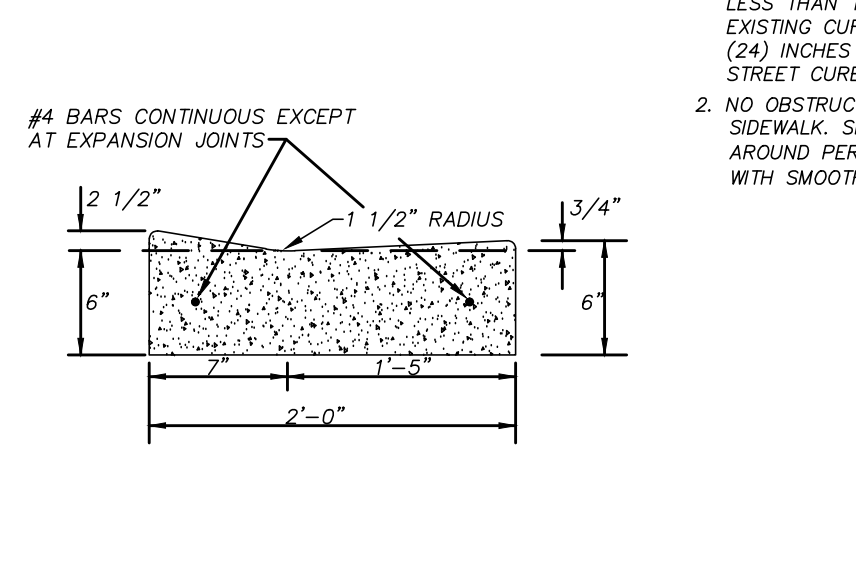
NEW SIDEWALK ABUTTING EXISTING SIDEWALK  
NTS



REVERSE FLOW

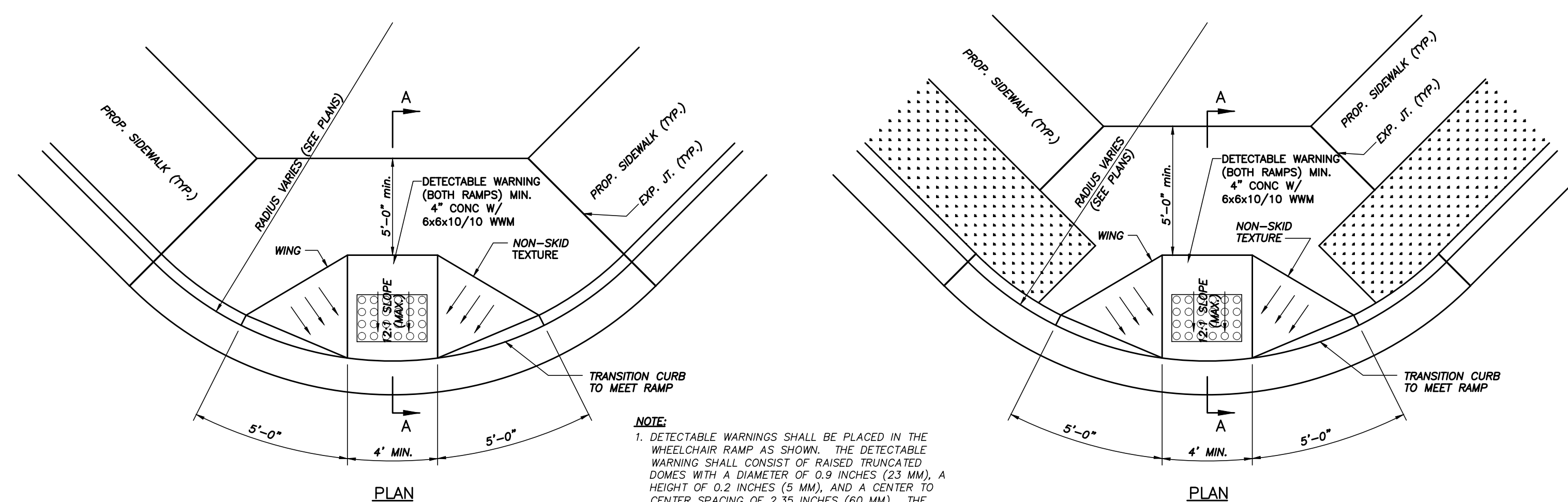


DIRECT FLOW



LAYDOWN

STANDARD CURB & GUTTER DETAIL  
NTS

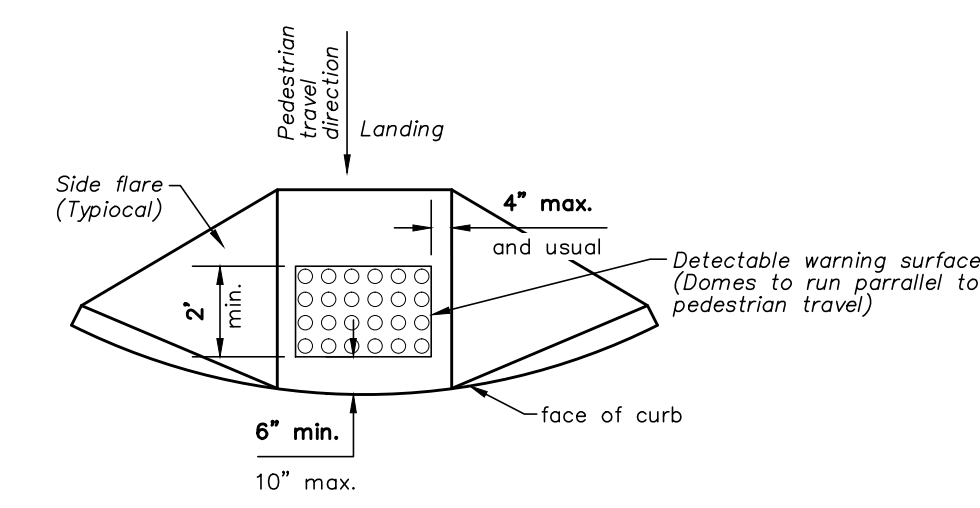


PLAN

PLAN

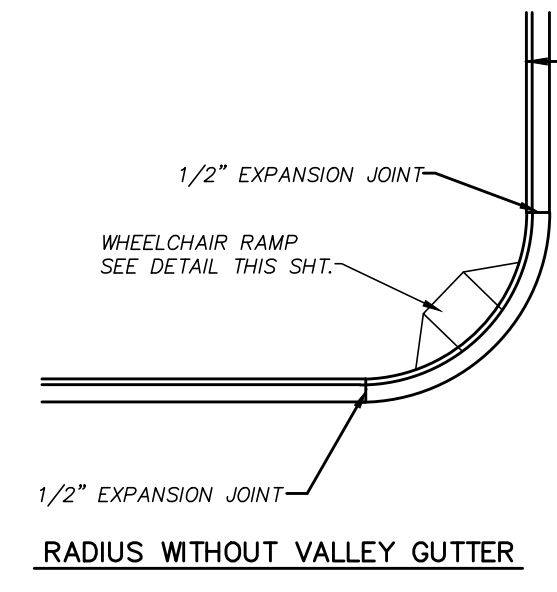
NOTE:  
1. DETECTABLE WARNINGS SHALL BE PLACED IN THE WHEELCHAIR RAMP AS SHOWN. THE DETECTABLE WARNING SHALL CONSIST OF RAISED TRUNCATED DOMES WITH A DIAMETER OF 0.9 INCHES (23 MM), A HEIGHT OF 0.2 INCHES (5 MM), AND A CENTER-TO-CENTER SPACING OF 2.35 INCHES (60 MM). THE DISTANCE OF DETECTABLE WARNING SHALL BE 36 INCHES, AND THE FULL WIDTH OF THE RAMP. THE WARNINGS SHALL BE EITHER MANUFACTURED BRICK OR COLORED STAMPED CONCRETE THAT VISUALLY AND PERMANENTLY CONTRASTS ADJOINING SURFACES.

WHEELCHAIR RAMP DETAILS  
NTS

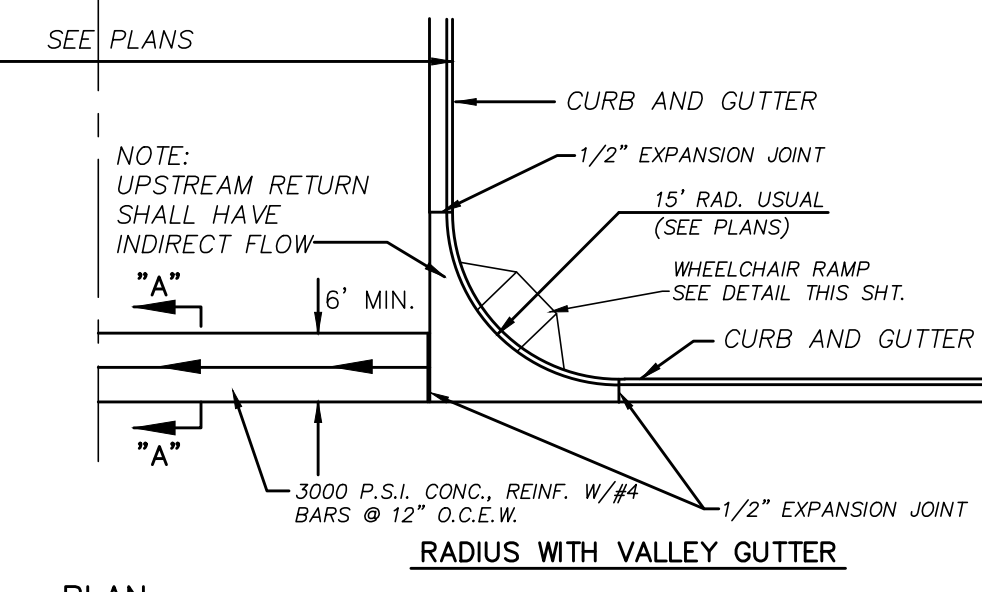


Typical placement of detectable warning surface on slope ramp run

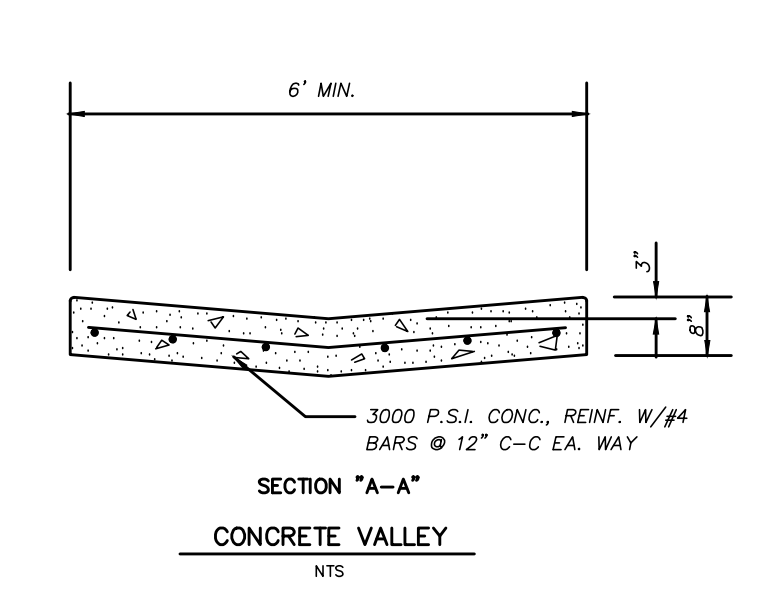
NOTE:  
1. REINFORCING CONTINUOUS EXCEPT AT EXPANSION JOINTS.  
2. BARS SHALL EXTEND THROUGH EXPANSION JOINTS AT LEAST 8" AND ONE END WRAPPED, GREASED OR PROVIDED WITH ACCEPTABLE SLEEVES TO PREVENT BOND BETWEEN REINFORCING AND CONCRETE.  
3. EXPANSION JOINTS 1/2" THICK SHALL BE PROVIDED AT INTERVALS NOT TO EXCEED 40'-0" AND AT ENDS OF ALL CURBS, DRIVEWAY RADI AND CURB INLETS.



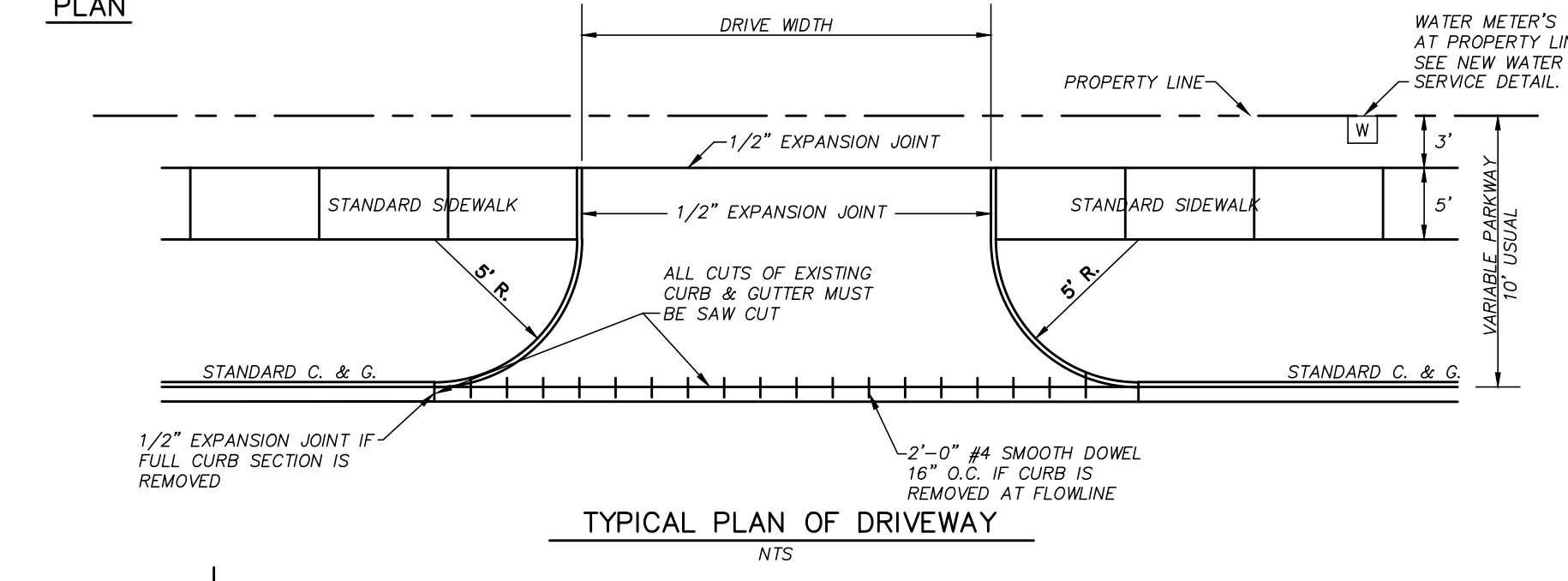
RADIUS WITHOUT VALLEY GUTTER



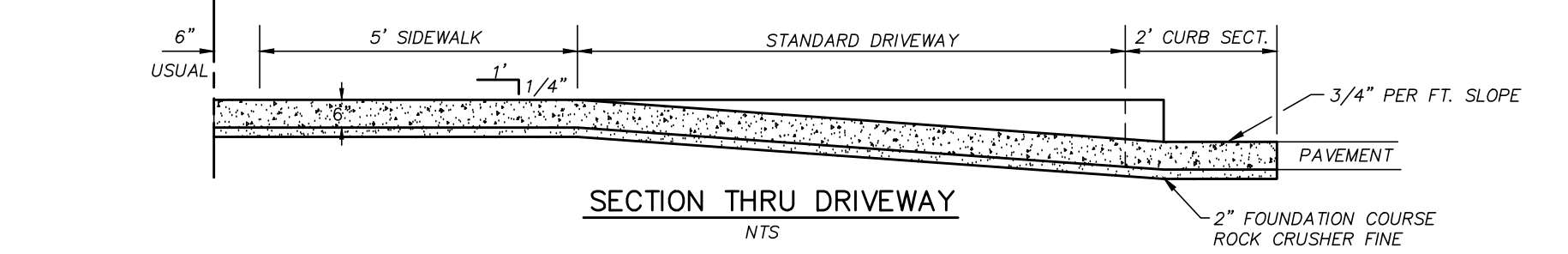
RADIUS WITH VALLEY GUTTER



CONCRETE VALLEY  
NTS

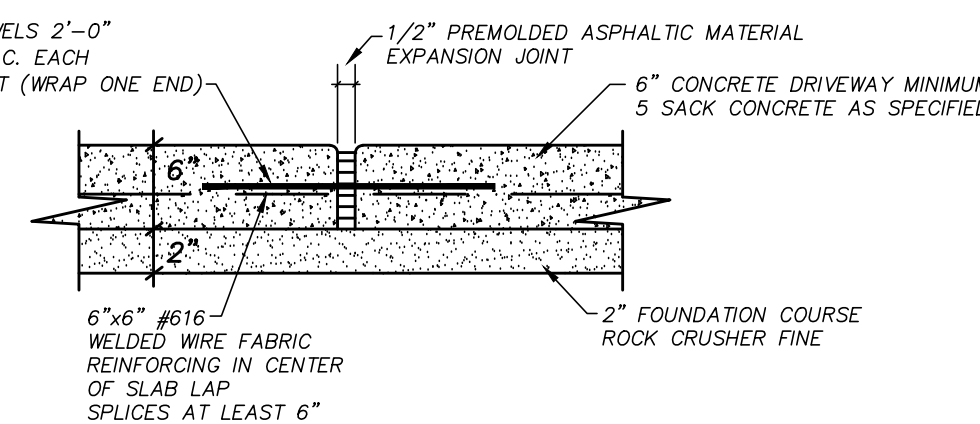


TYPICAL PLAN OF DRIVEWAY  
NTS



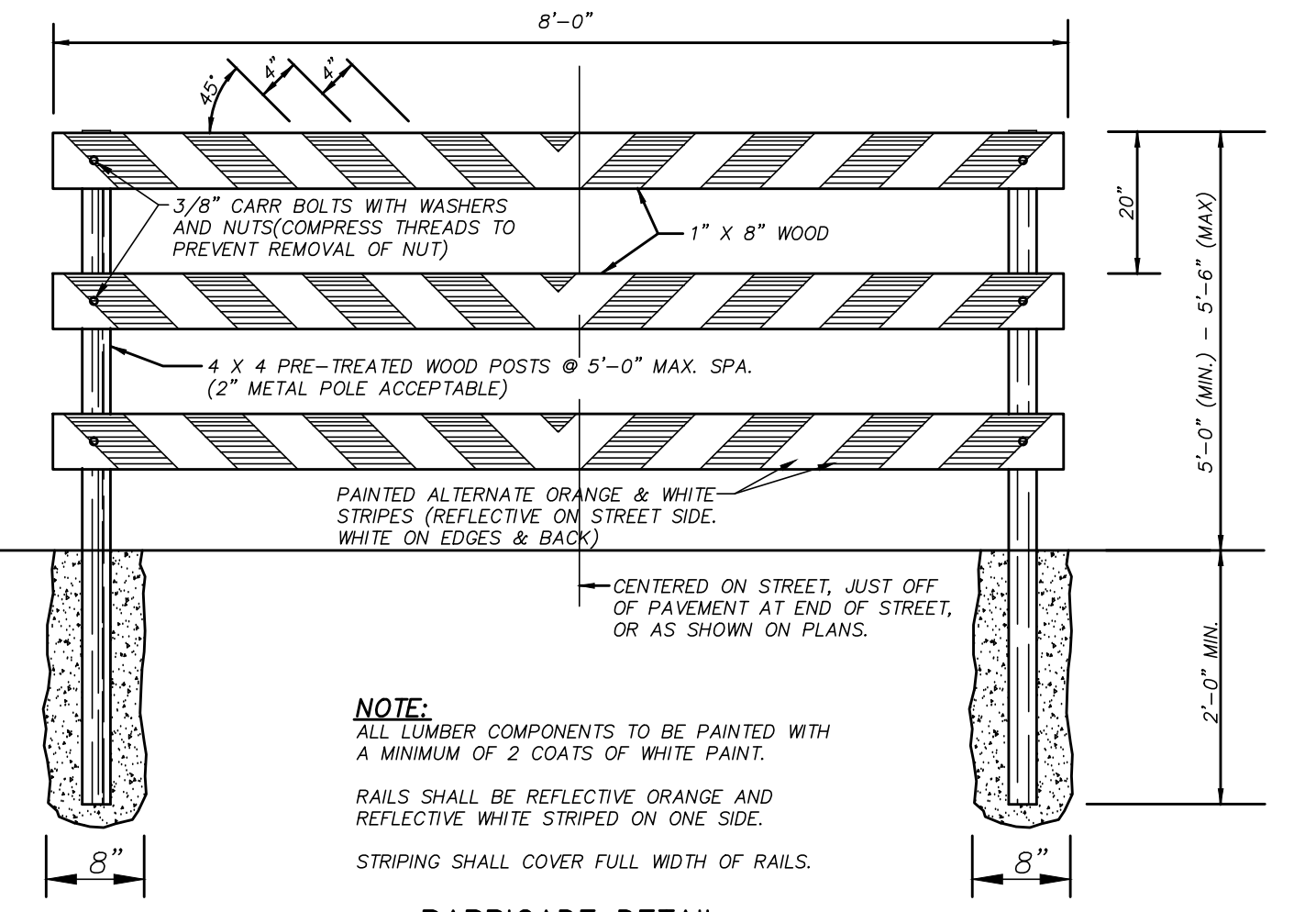
SECTION THRU DRIVEWAY  
NTS

NOTE:  
1. SIDEWALK(S) ELEVATION SHALL BE NOT LESS THAN THE TOP ELEVATION OF THE EXISTING CURB, NOR MORE THAN TWENTY-FOUR (24) INCHES ABOVE THE HEIGHT OF THE STREET CURB.  
2. NO OBSTRUCTIONS ARE ALLOWED IN SIDEWALK. SIDEWALKS SHALL VEER AROUND PERMANENT OBSTRUCTIONS WITH SMOOTH TRANSITION CURVES.



TYPICAL SECTION W/CUT AT FLOW LINE  
NTS

SAFETY PROVISIONS:  
THE CONTRACTOR SHALL COMPLY WITH "TEXAS MANUAL, UNIFORM TRAFFIC CONTROL DEVICES FOR STREETS AND HIGHWAYS," VOLUME NO. 1, PART NO. 6, WITH CURRENT CHANGES.



BARRICADE DETAIL  
NTS

NOTE:  
ALL LUMBER COMPONENTS TO BE PAINTED WITH A MINIMUM OF 2 COATS OF WHITE PAINT.  
RAILS SHALL BE REFLECTIVE ORANGE AND REFLECTIVE WHITE STRIPED ON ONE SIDE.  
STRIPING SHALL COVER FULL WIDTH OF RAILS.

The Bright Star of  
Central Texas  
**Harker Heights**

DEPARTMENT OF PUBLIC WORKS



PAVING DETAILS

ENGINEER:	SCALE: N.T.S.	DATE: 9-21-12	SHEET #
	DRAWN BY:	CHECKED BY:	OF